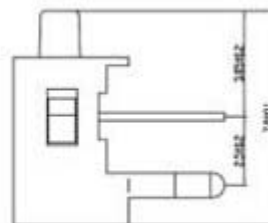
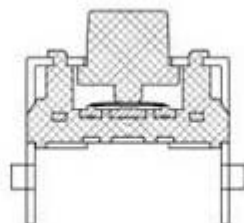
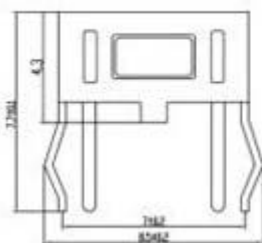


KAN3531-0501B угловая



Detailed introduction to Tact Switch (KAN3531):

Tact Switch

Circuit: ON-OFF(ON)-OFF

Rating(UL,CSA):DC 12V 50mA

Travel:0.25±0.1mm

Actuating Force: 1.3,1.7,2.6±0.3N

Withstand Voltage: 250VAC/1min

Contact Resistance: ≤50MΩ

Life(times): at least 100,000 times

Insulation Resistance: at Least 1000M Ω

Temperature: -20~ +70°C